



KGM

You choose the best

# KOLKATA GENERAL MAINTENANCE AND PROPERTIES MANAGEMENT SP- L.L.C

COMPANY PROFILE





KGM

You choose the best

# TABLE OF CONTENTS

● **About Company**

● **Our Vision**

● **Our Mission**

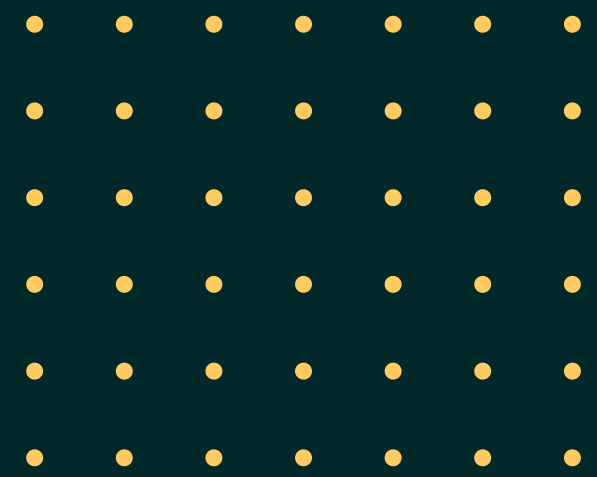
● **Our Ambition**

● **Our Projects**

● **Our Service**

● **HEALTH, SAFETY &  
ENVIRONMENT (HSE)  
PROCEDURE**

● **Contact**







KGM

You choose the best

# WELCOME TO OUR COMPANY!

Kolkata General Maintenance and Properties Management SP- L.L.C is Established on September 1, 2020, we following local and international standards and policies, our prime business objective is to provide our customers with superior quality products that add value to their business coupled with excellent maintenance services .





KGM

You choose the best

# ABOUT US

- Kolkata has commenced implementation of its most ambitious strategy to date and one which will establish the Company as the pre-eminent global provider of all kinds of PLASTER, WALLPAPER FIXING, PAINTING, CELLING ETC.
- As part of this strategy – and in a bid to strengthen our Services UAE market, we are planning to established different branches to all parts of the United Arab of Emirates, becoming one of the Top providers of construction works in the region.
- We are committed to the highest possible standards of Toys on all U.A.E. We also provide continuous training for all staff to ensure only the most modern, efficient and environmentally sustainable practices are followed as stated later.





KGM

You choose the best

# OUR VISION

## 01.

Our vision is to become the leading global provider of comprehensive construction services, known for our unwavering dedication to quality and sustainability. We aim to establish a strong presence throughout the UAE, with multiple branches delivering top-tier construction solutions. By prioritizing the highest standards and integrating modern, eco-friendly practices, we strive to set new benchmarks in the industry, ultimately transforming the construction landscape and contributing to a better, more sustainable future.





KGM

You choose the best

## OUR MISSION

Our mission at Kolkata is to revolutionize the construction industry by delivering unparalleled quality in plastering, wallpaper fixing, painting, and ceiling works across the United Arab Emirates. We are dedicated to exceeding customer expectations through innovative and sustainable practices, ensuring every project reflects our commitment to excellence. By providing continuous training and development for our staff, we ensure that our services are always at the forefront of industry standards, fostering a culture of growth, efficiency, and environmental responsibility.





KGM

You choose the best

# OUR GOALS

## 01. **Commitment**

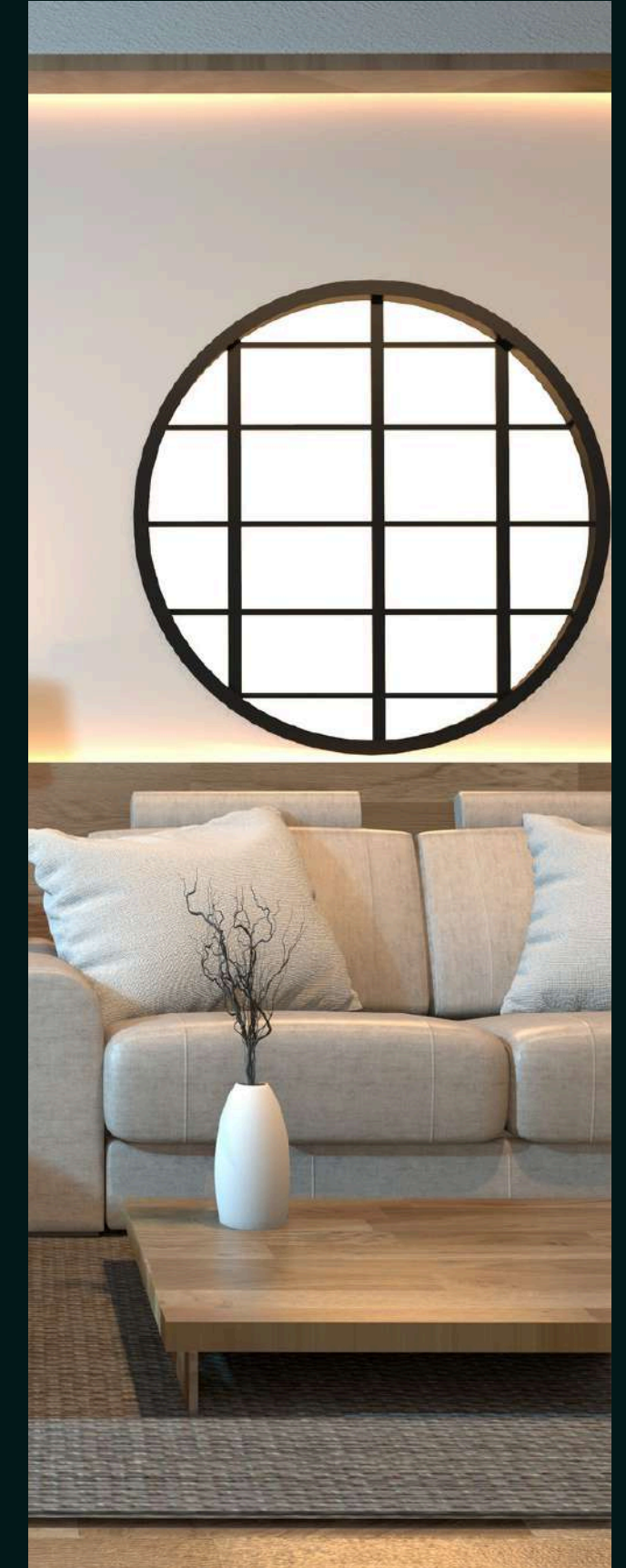
We are committed to the success of our business and our organization.

We value professionalism and technical mastery.

We are disciplined in generating the highest productivity.

We extend our innovation to its maximum potential.

We recognize the environment as a major business issue.







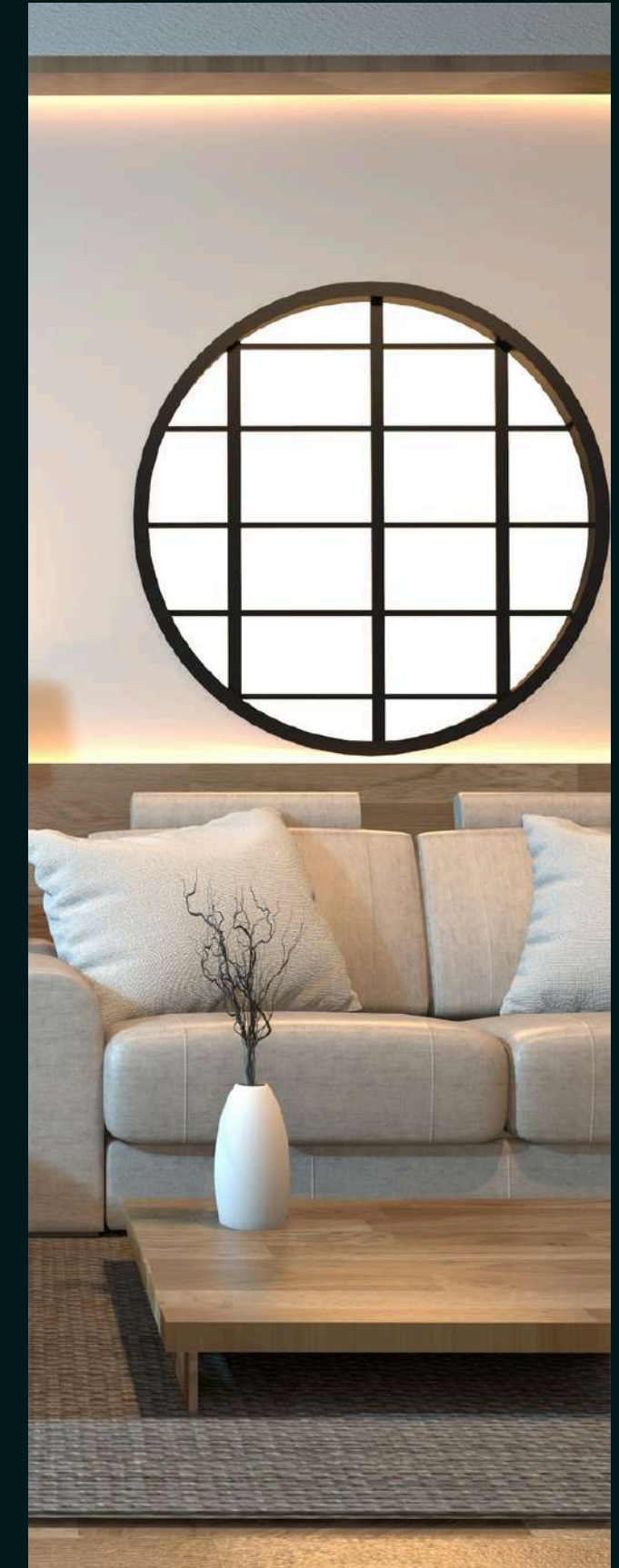
KGM

You choose the best

# OUR GOALS

## 02. Transparency and Clarity

Honesty, leadership,  
integrity and quality.  
Customer satisfaction  
and loyalty.  
Reliability.  
Responsibility.







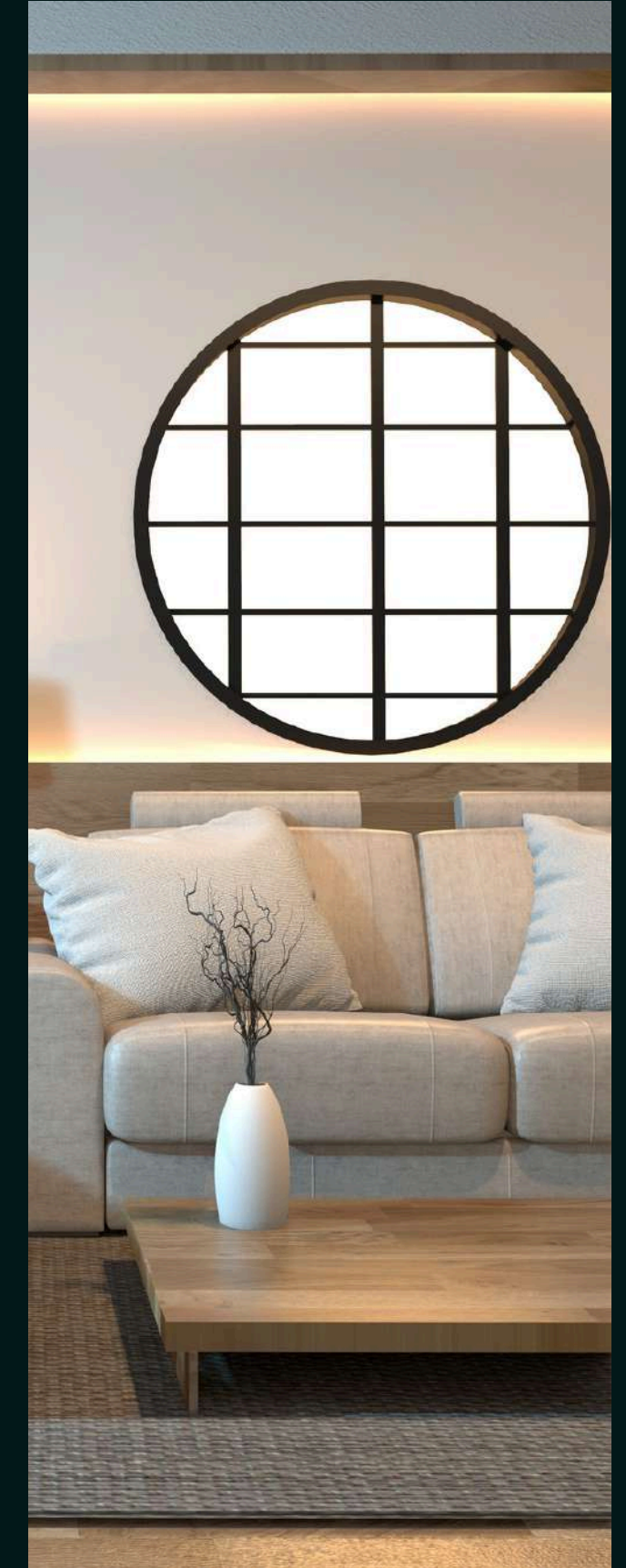
KGM

You choose the best

# OUR GOALS

## 03. **Tranquility**

We aim to be the first choice for our customers by meeting their needs with our experienced team. We prioritize using quality products manufactured in the UAE to support local industries and advance the UAE economy and community. Our vision is to be one of the top construction and maintenance companies in the UAE and GCC.





# OUR AMBITION

**We aspire to work on the largest MEGA-structure projects in the U.A.E and become one of the major companies at the level of the Gulf and the World, and to expand the company's stretch branches outside the U.A.E.**







KGM

You choose the best



# HEALTH, SAFETY & ENVIRONMENT (HSE) PROCEDURE



1

USE OF FULL RANGE  
OF PERSONAL  
PROTECTIVE  
EQUIPMENT (PPE).



2

TRAINED AND  
COMPETENT  
STAFF.



3

USE OF SAFE  
TOOLS &  
EQUIPMENT.



4

REGULAR ON-SITE SAFETY  
AUDITS "ZERO ACCIDENT &  
ZERO MAN HOURS LOST

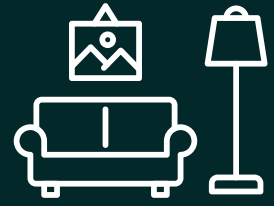




KGM

You choose the best

# OUR SERVICE



## Gypsum Decoration

Transform your interiors with our expert gypsum decoration services. Whether you're looking to add elegant ceiling designs, intricate wall patterns, or stunning decorative elements, our skilled craftsmen bring your vision to life. We use high-quality materials to ensure durability and a flawless finish that enhances the beauty of your space.



## Painting and Interior Decoration Landscape and Irrigation

Revitalise your home or office with our professional painting and interior decoration services. Our team of experienced painters uses premium paints to deliver a smooth, long-lasting finish. We also offer comprehensive interior decoration solutions, helping you choose the perfect color schemes, furnishings, and accessories to create a cohesive and stylish look.



## Maintenance

Keep your property in top condition with our reliable maintenance services. We offer a wide range of services, including electrical, plumbing, and general repairs, to ensure your home or business runs smoothly. Our team is dedicated to providing prompt and efficient solutions, minimizing disruptions and extending the lifespan of your property.



## Tile & Marble Fixing

Enhance your interiors with our professional tile and marble fixing services. Whether you're updating your kitchen, bathroom, or any other area, we provide precise installation of tiles and marble to achieve a polished and sophisticated look. Our experts handle every aspect, from surface preparation to finishing touches, ensuring a flawless result.





KGM

You choose the best

# GYPSUM DECORATION

Transform your interiors with our expert gypsum decoration services. Whether you're looking to add elegant ceiling designs, intricate wall patterns, or stunning decorative elements, our skilled craftsmen bring your vision to life. We use high-quality materials to ensure durability and a flawless finish that enhances the beauty of your space.



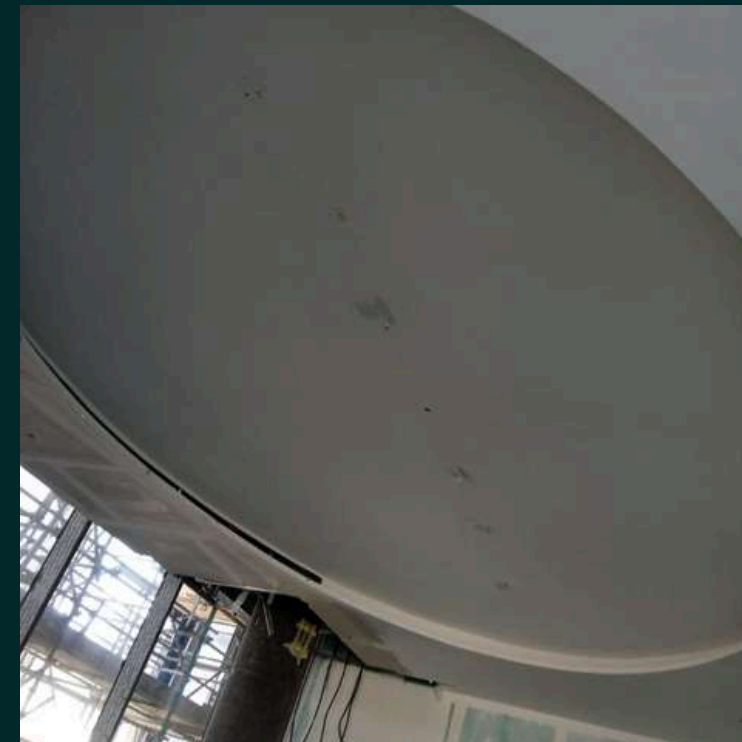
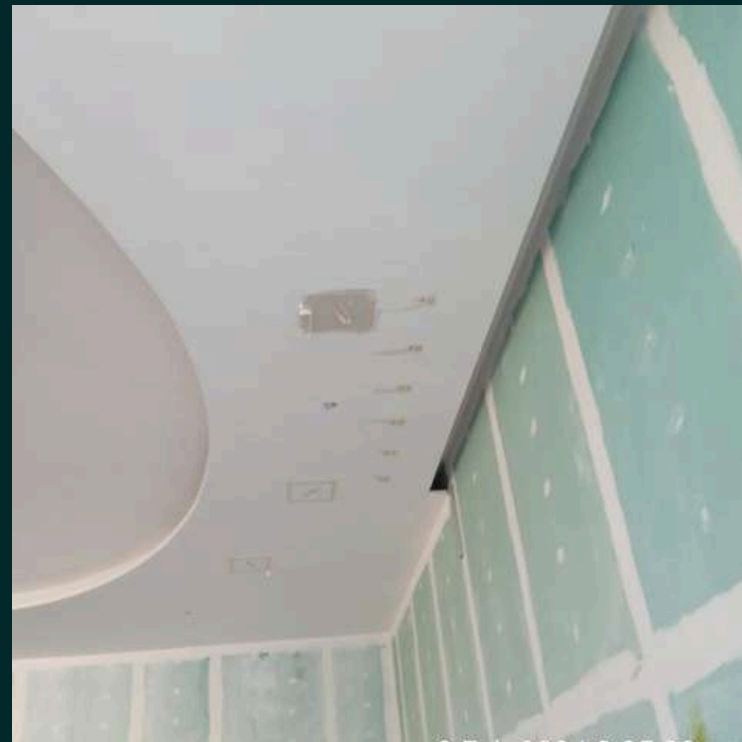




KGM

You choose the best

# OUR PROJECTS



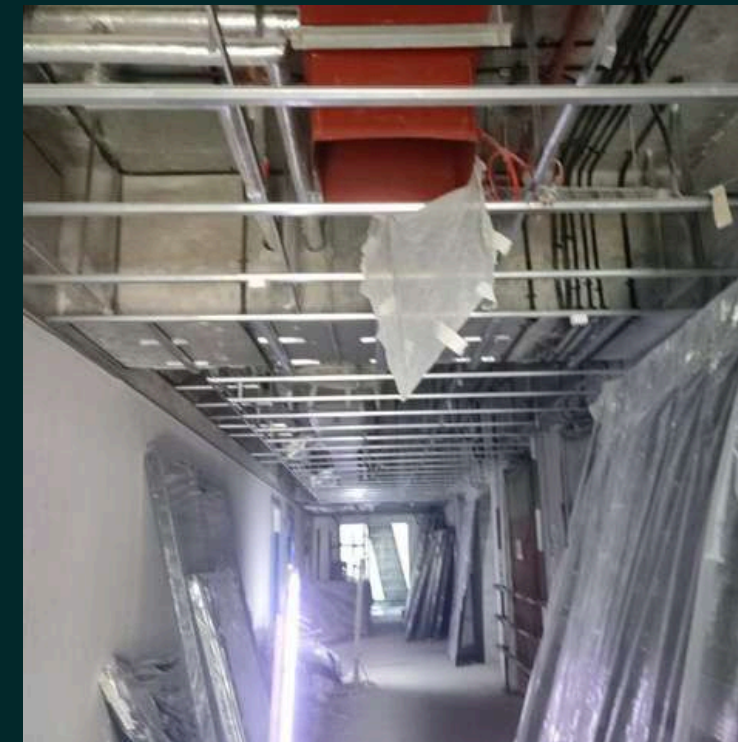




KGM

You choose the best

# OUR PROJECTS







Gypsum Board Datasheet

05-2015

## Knauf Regular Gypsum Board (RG)

Knauf Regular Gypsum Boards (RG) are gypsum wallboards which are essential for standard lightweight drywall constructions.





# Knauf Regular Gypsum Boards (RG) EN-BS



## Product Description

Knauf Regular Gypsum Boards (RG) are gypsum wallboards which are essential for standard lightweight drywall constructions.

## Fields of Application

Knauf Regular Gypsum Boards are the essential for standard lightweight drywall construction and are used as the cladding component for:

Drywall partitions using metal frames  
Suspended ceilings using metal frames  
Furring and wall linings  
Prefabricated building units  
Drylining blockwork/concrete walls using dot and dab of a gypsum based bonding compound

## Properties

- Lightweight constructions
- Easy, fast and dry application
- Good sound insulation performance
- Good fire protection performance
- A material that breathes and balances room climate and humidity levels
- Environmental friendly
- Limitless design options



## Technical Data

**Board Dimensions:** Thickness :  
9.5 mm / 12.5 mm / 15 mm  
Width : 1200 mm Length : 2400  
or 3000 mm\*

\* **Special sizes are available upon request.**

Minimum density (0.1 x  
10<sup>3</sup> kg/m<sup>3</sup>) : 0.6

**Edge Detail:** Square

Edge (SE) 

Taper Edge (TE) 

**Asbestos content:** None

**Appearance:** Ivory / Grey  
Paper Liner

**Board Type:** EN520 - Type A

**Reaction to Fire.** A2-s1,d0  
(B) According to DIN EN  
13501-1



**Note:**

-----

-----

-----

-----

-----

-----

**Please contact our sales department for inquiries about storage and packing.**

|                           |                                                                                                                                                                                                                                                                                                                                                                                                                                                                                                                                                                                                                                                                                                                                                                                                                                                             |                                                                                      |             |
|---------------------------|-------------------------------------------------------------------------------------------------------------------------------------------------------------------------------------------------------------------------------------------------------------------------------------------------------------------------------------------------------------------------------------------------------------------------------------------------------------------------------------------------------------------------------------------------------------------------------------------------------------------------------------------------------------------------------------------------------------------------------------------------------------------------------------------------------------------------------------------------------------|--------------------------------------------------------------------------------------|-------------|
| <b>Knauf Head Office</b>  | <b>Knauf Qatar Branch</b>                                                                                                                                                                                                                                                                                                                                                                                                                                                                                                                                                                                                                                                                                                                                                                                                                                   | <b>Knauf Manufacturing Plant</b>                                                     | Made in UAE |
| ▶ Phone: +971 4 337 7170  | P.O.Box 27111 Doha,<br>State of Qatar Tel:<br>+974 44528191 Fax:<br>+974 44528181                                                                                                                                                                                                                                                                                                                                                                                                                                                                                                                                                                                                                                                                                                                                                                           | P.O.Box 50006 Ras Al Khaimah,<br>U.A.E. Tel: +971 7 221 5300 Fax:<br>+971 7 221 5301 |             |
| ▶ Fax: +971 4 334 9659    | The information provided in this leaflet is only intended to give guidance in selecting and using Knauf products. While we make every effort to ensure its accuracy, neither Knauf LLC and its branches nor any of this employees or affiliates warrant or assume any legal liability or responsibility for the completeness or usefulness of any failure in installation or constructing structure installation or building or caused by using this leaflet. Readers are advised to independently verify this information prior to reply on it. In particular, readers must obtain appropriate independent advice on the use of products in specific structures, installations or buildings to ensure compliance with all regulations, in cluding health and safety regulations. Knauf reserves the right to amend technical specification without notice. |                                                                                      |             |
| ▶ P.O. Box: 112871, Dubai | <b>The constructional and structural properties, and characteristic building physics Knauf system can solely be ensured with the exclusive use Knauf system components, or other product expressly recommended by Knauf.</b>                                                                                                                                                                                                                                                                                                                                                                                                                                                                                                                                                                                                                                |                                                                                      |             |
| ▶ info@knauf.ae           |                                                                                                                                                                                                                                                                                                                                                                                                                                                                                                                                                                                                                                                                                                                                                                                                                                                             |                                                                                      |             |
| <b>www.knauf.ae</b>       |                                                                                                                                                                                                                                                                                                                                                                                                                                                                                                                                                                                                                                                                                                                                                                                                                                                             |                                                                                      |             |



**KNAUF**

**كناوف**



Gypsum Board Datasheet

11-2015

## Knauf Moisture Resistant Gypsum Boards (MR - H2)

Knauf Moisture Resistant Gypsum Boards (MR - H2) are gypsum wallboards manufactured specifically for use in areas exposed to moisture and humidity.





# Knauf Moisture Resistant Gypsum Boards (MR - H2) EN-BS

## Product Description

Knauf Moisture Resistant Gypsum Boards (MR - H2) are gypsum wallboards manufactured specifically for use in areas exposed to moisture and humidity.

## Fields of Application

Knauf Moisture Resistant Gypsum Boards (MR - H2) are standard performance gypsum boards used as the cladding component of drywall constructions in humid areas such as:

- Partition or Ceilings of Kitchens/Bathrooms
- Wall Linings/Furrings in Kitchens/Bathrooms
- Partitions with tiled finish requirements
- Any internal area which is exposed to humidity

## Properties

- Lightweight constructions Easy, fast and dry application Good sound insulation performance Hydrophobic boards impregnated against absorption of moisture A material that breathes and balances room climate and humidity levels Environmental friendly Limitless design options





## Technical Data

**Board Dimensions:**  
Thickness : 12.5 mm  
Width : 1200 mm Length :  
2400 or 3000 mm\*

\* Special sizes are available upon request.

**(Boards Weights (Average values):**  
12.5 mm approx. 9.2 kg / m<sup>2</sup>

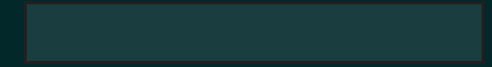
Minimum density (0.1 x 10<sup>3</sup> kg/m ): 0.6

Density: ≤ 800 kg /m<sup>2</sup>

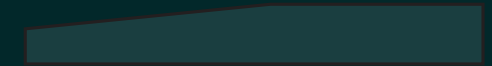
**Surface Water Absorption: EN520**  
≤ 180 g/m

**Total Water Absorption: EN520**  
≤ 10 %

**Edge Detail:**  
Square Edge (SE)



Taper Edge (TE)



**Asbestos content: None**

**Appearance:**  
Green Paper Liner


**Board Type:**  
EN520 - Type H2

**Reaction to Fire. A2-s1,d0 (B) According  
to DIN EN 13501-1**



Four horizontal dashed lines for handwritten text.

Please contact our sales department for inquiries about storage and packing.

|                                                    |                                                                                                                                                                                                                                                                                                                                                                                                                                                                                                                                                                                                                                                                                                                                                                                                                                                                                                                                                                                                                                                                                                 |                                                                                   |                                                                                                      |
|----------------------------------------------------|-------------------------------------------------------------------------------------------------------------------------------------------------------------------------------------------------------------------------------------------------------------------------------------------------------------------------------------------------------------------------------------------------------------------------------------------------------------------------------------------------------------------------------------------------------------------------------------------------------------------------------------------------------------------------------------------------------------------------------------------------------------------------------------------------------------------------------------------------------------------------------------------------------------------------------------------------------------------------------------------------------------------------------------------------------------------------------------------------|-----------------------------------------------------------------------------------|------------------------------------------------------------------------------------------------------|
| <b>Knauf Head Office</b>                           | <b>Knauf Qatar Branch</b>                                                                                                                                                                                                                                                                                                                                                                                                                                                                                                                                                                                                                                                                                                                                                                                                                                                                                                                                                                                                                                                                       | <b>Knauf Manufacturing Plant</b>                                                  | <br>Made in UAE |
| ▶ Phone: +971 4 337 7170                           | P.O.Box 27111 Doha, State of Qatar<br>Tel: +974 4452 8191 Fax: +974 4452 8181                                                                                                                                                                                                                                                                                                                                                                                                                                                                                                                                                                                                                                                                                                                                                                                                                                                                                                                                                                                                                   | P.O.Box 50006 Ras Al Khaimah, U.A.E.<br>Tel: +971 7 221 5300 Fax: +971 7 221 5301 |                                                                                                      |
| ▶ Fax: +971 4 334 9659                             | <p>The information provided in this leaflet is only intended to give guidance in selecting and using Knauf products. While we make every effort to ensure its accuracy, neither Knauf LLC and its branches nor any of tis employees or affiliates warrant or assume any legal liability or responsibility for the completeness or usefullness of any failure in installation or constructing any structure installation or building or caused by using this leaflet. Readers are advised to independently verify this information prior to rely on it. In particular, readers must obtain appropriate independent advice on the use of products in specific structures, insllations or buildings to ensure compliance with all regulations, including health and safety regulations. Knauf reserves the right to amend technical specification without notice.</p> <p>The constructional and structural properties, and characteristic building physics Knauf system can solely be ensured with the exclusive use Knauf system components, or other product expressly recommended by Knauf.</p> |                                                                                   |                                                                                                      |
| ▶ P.O.Box: 112871, Dubai                           |                                                                                                                                                                                                                                                                                                                                                                                                                                                                                                                                                                                                                                                                                                                                                                                                                                                                                                                                                                                                                                                                                                 |                                                                                   |                                                                                                      |
| ▶ <a href="mailto:info@knauf.ae">info@knauf.ae</a> |                                                                                                                                                                                                                                                                                                                                                                                                                                                                                                                                                                                                                                                                                                                                                                                                                                                                                                                                                                                                                                                                                                 |                                                                                   |                                                                                                      |
| <a href="http://www.knauf.ae">www.knauf.ae</a>     |                                                                                                                                                                                                                                                                                                                                                                                                                                                                                                                                                                                                                                                                                                                                                                                                                                                                                                                                                                                                                                                                                                 |                                                                                   |                                                                                                      |



**KNAUF**

**كناوف**



Gypsum Board Datasheet

05-2015

## Knauf Fire Resistant Gypsum Boards (FR)

Knauf Fire Resistant Gypsum Boards (FR) are gypsum wallboards specially designed to offer superior fire resistance performance when used in drywall partitions, shaftwalls, ceilings and lining systems.



# Knauf Fire Resistant Gypsum Boards (FR) EN-BS

## Product Description

Knauf Fire Resistant Gypsum Boards (FR) are gypsum wallboards specially designed to offer superior fire resistance performance when used in drywall partitions, shaftwalls, ceilings and lining systems.

## Fields of Application

Knauf Fire Resistant Gypsum Boards (FR) are high performance gypsum boards used as the cladding component of drywall constructions such as:

- Fire rated partitions using metal frames
- Fire rated suspended ceilings using metal frames
- Fire rated furring and wall linings
- Fire rated shaftwalls

NOTE: Fire resistant gypsum boards are just part of a complete fire rated assembly. To achieve a certain fire rating on a Knauf drywall assembly, the complete system components from Knauf has to be used and the assembly has to be installed according to Knauf s installation guidelines.

## Properties

- Lightweight constructions
- Easy, fast and dry application
- Good sound insulation performance
- High fire protection performance
- Contains glass fibre additives to maintain the integrity of board for longer time periods than standard boards when exposed to fire
- A material that breathes and balances room climate and humidity levels
- Environmental friendly
- Limitless design options

Please contact our sales department for inquiries about storage and packing.

### Knauf Head Office

▶ Phone: +971 4 337 7170

▶ Fax: +971 4 334 9659

▶ P.O. Box: 112871, Dubai

▶ [info@knauf.ae](mailto:info@knauf.ae)

[www.knauf.ae](http://www.knauf.ae)

### Knauf Qatar Branch

P.O.Box 27111 Doha, State of Qatar  
Tel: +974 44528191 Fax: +974 44528181

### Knauf Manufacturing Plant

P.O.Box 50006 Ras Al Khaimah, U.A.E.  
Tel: +971 7 221 5300 Fax: +971 7 221 5301

Made in UAE

The information provided in this leaflet is only intended to give guidance in selecting and using Knauf products. While we make every effort to ensure its accuracy, neither Knauf LLC and its branches nor any of this employees or affiliates warrant or assume any legal liability or responsibility for the completeness or usefulness of any failure in installation or constructing structure installation or building or caused by using this leaflet. Readers are advised to independently verify this information prior to reply on it. In particular, readers must obtain appropriate independent advice on the use of products in specific structures, installations or buildings to ensure compliance with all regulations, including health and safety regulations. Knauf reserves the right to amend technical specification without notice.

**The constructional and structural properties, and characteristic building physics Knauf system can solely be ensured with the exclusive use Knauf system components, or other product expressly recommended by Knauf.**



## Technical Data

### Board Dimensions:

Thickness : 12.5 mm / 15 mm

Width : 1200 mm

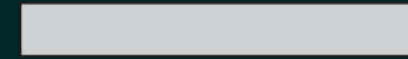
Length : 2400 or 3000 mm\*

\* Special sizes are available upon request.

Minimum density (0.1 x 10<sup>3</sup> kg/m<sup>3</sup>): 0.85

### Edge Detail:

Square Edge (SE)



Taper Edge (TE)



**Asbestos content:** None

### Appearance:

Pink Paper Liner

### Board Type:

EN520 - Type DF

### Reaction to Fire.

A2-s1,d0 (B) According to DIN EN 13501-1

## Note:

-----

-----

-----

-----

-----

-----

-----

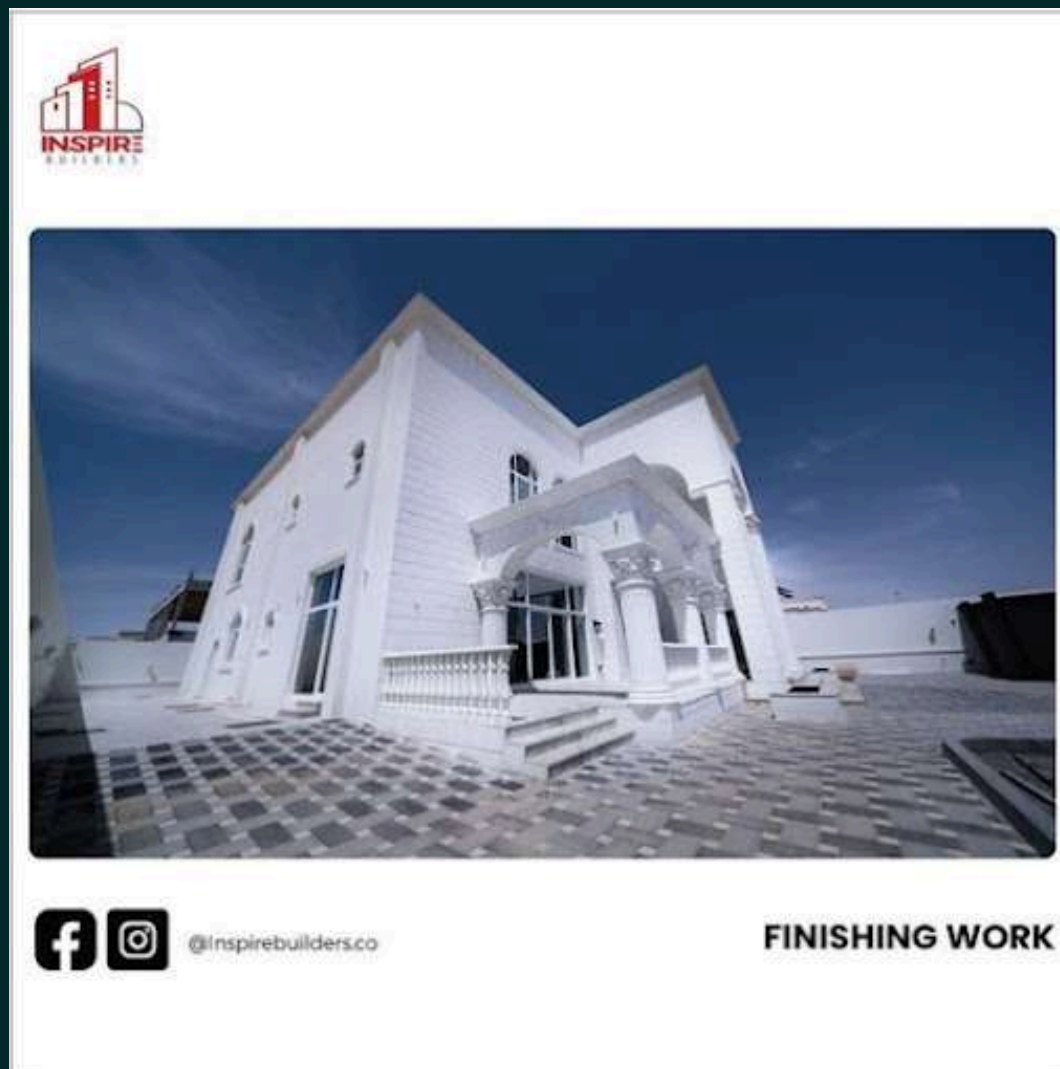


KGM

You choose the best

# PAINTING AND INTERIOR DECORATION LANDSCAPE AND IRRIGATION

Revitalise your home or office with our professional painting and interior decoration services. Our team of experienced painters uses premium paints to deliver a smooth, long-lasting finish. We also offer comprehensive interior decoration solutions, helping you choose the perfect color schemes, furnishings, and accessories to create a cohesive and stylish look.







KGM

You choose the best

# OUR PROJECTS







KGM

You choose the best

# OUR PROJECTS







KGM

You choose the best

# OUR PROJECTS





## Stucco

### Product description

#### Type

This product is an acrylic copolymer based putty.

---

#### Features and benefits

Easy application. Provides an excellent base for subsequent coats. Free from harmful chemicals like APEO, formaldehyde, heavy metals etc.

#### Recommended use

Ideal for interior surfaces.

#### Substrate

Cement plaster, concrete, block work, rendered surfaces, gypsum board etc. Substrate should have sufficient strength to receive the paint. Any defects in the substrate like surface undulations, cracks, pin holes etc., should be rectified/filled before starting painting.

#### Product data

Packaging size

4 L and 18L Saudi : 2.5 kg and 25 kg Egypt and Libya : 16 kg Turkey : 25 kg India : 5kg, 10kg and 20kg

White





|                  |                                                                                                                                                  |                  |
|------------------|--------------------------------------------------------------------------------------------------------------------------------------------------|------------------|
| Solids by volume | 50                                                                                                                                               | ± 2volume%       |
| Specific gravity | 1.83                                                                                                                                             | Theoretical      |
| VOC              | 0                                                                                                                                                | g/l ISO 11890 EU |
| VOC comments     | This is the theoretical value. Tested value will vary depending on test methodology, accuracy of equipment used for testing and test conditions. |                  |

## Application data

The product can be applied by

Putty knife

Film thickness per coat

Typical recommended range Dry

film thickness

Wet film thickness

Film thickness will vary and is calculated as average.

Theoretical spreading rate

85 - 130 μm

165 - 250 μm

6 - 4 m<sup>2</sup>/l

Date of issue: 18.11.2020

Product code: 4274

Page: 1/4

This Technical Data Sheet supersedes those previously issued.

The Technical Data Sheet (TDS) is recommended to be read in conjunction with the Safety Data Sheet (SDS) for this product.

For your nearest local Jotun office, please visit our website at [www.jotun.com](http://www.jotun.com).



Spreading rate per coat : 2.8 m<sup>2</sup>/kg (Theoretical) Spreading rate depends on film thickness applied, type of texture, surface porosity, imperfections, temperature, wastage during painting etc. The average spreading rate per coat can be confirmed at site by a trial application. Maximum spread rate per coat is obtained at minimum dry film thickness and vice versa.

### Thinner

Water

### Dilution

Maximum 5 %

### Conditions during application

The temperature of the substrate should be minimum 10 °C and at least 3 °C above the dew point of the air, measured in the vicinity of the substrate. Good ventilation is usually required in confined areas to ensure proper drying.

### Drying times

Drying times are generally related to air circulation, temperature, film thickness and number of coats, and will be affected correspondingly.

1. Recommended data given is, for recoating with the same generic type of paint.
2. In case of multi-coat application, drying times will be influenced by the number and sequence and by the total thickness of previous coats applied.
3. The surface should be dry and free from any contamination prior to application of the subsequent coat.



The drying time is measured by stated values:

Relative Humidity (RH) 50 %

Substrate temperature

10 °C

23 °C

40 °C

Surface (touch) dry Hard dry

Dry to over coat, minimum

6 h

3 h

1 h

16 h

8 h

6 h

16 h

8 h

6 h

Surface preparation

## Directions for use

The substrate must be sound, clean, dry and free from dust, oil, grease, laitance etc. All traces of form release agents/curing agents must be removed. A light sanding with suitable abrasive material is recommended before application. Any resulting dust/loose particles must be removed.

## Recommended paint system Primer

PVA Primer or Fenomastic Emulsion Primer : 1 Coat

Filler

Stucco : 2 Coats

Topcoat

Recommended paint system



---

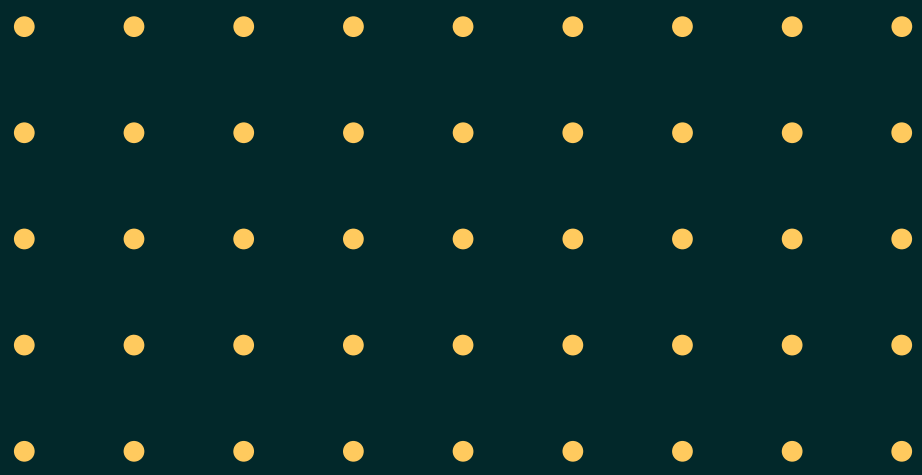
Date of issue: 18.11.2020

Product code: 4274

Page: 2/4

This Technical Data Sheet supersedes those previously issued.

The Technical Data Sheet (TDS) is recommended to be read in conjunction with the Safety Data Sheet (SDS) for this product. For your nearest local Jotun office, please visit our website at [www.jotun.com](http://www.jotun.com).





# Technical Data

## Sheet Stucco

---



### Remarks

Other systems may be specified, depending on area of use. Contents of packaging with different batch numbers must be mixed together before use. Please refer to the Decorative Sales Department for technical advice. This product is available in: United Arab Emirates, Bahrain, Kuwait, Qatar, Saudi, Oman, Turkey, Egypt and Libya

### Storage

The product must be stored in accordance with national regulations. Keep the containers in a dry, cool, well ventilated space and away from sources of heat and ignition. Containers must be kept tightly closed. Handle with care.

---

## Environmental labelling

### Green Building Standards

The product contains effective film conserving agents that contributes to reducing mould growth on the wooden surface. LEED®v4 (2013) / LEED®v4 .1 (2019): EQ credit: Low emitting materials - VOC content for Primers, Sealers and Undercoaters (100 g/l) (CARB (SCM)2007) and emission lower than or equal to 0,5 mg/m<sup>3</sup> (CDPH method 1.2) MR credit: Building product disclosure and optimization - Material Ingredients, Option 2: Material Ingredient Optimization, International Alternative Compliance Path - REACH optimization: Fully inventoried chemical ingredients to 100 ppm and not containing substances on the REACH Authorization list – Annex XIV, the Restriction list – Annex XVII and the SVHC candidate list. - Environmental Product Declarations. Product-specific Type III EPD (ISO 14025;21930, EN 15804). BREEAM® International (2016) - Hea 02: VOC emission ((ISO 16000 - series (2006) or CDPH method 1.2 (2017)) and the VOC content for Interior matt walls and ceilings (10 g/l) - Mat 01: Product-specific Type III EPD (ISO 14025;21930, EN 15804). Additional certificates and approvals may be available on request.

# Health and safety

Please observe the environmental and precautionary notices displayed on the container. A Material Safety Data Sheet for the product has been issued. Detailed information regarding health and safety risks and precautions for the use of this product is specified in the product's Safety Data Sheet. **First-aid measures**, refer to section 4. **Handling and storage**, refer to section 7. **Transport information**, refer to section 14. **Regulatory information**, refer to section 15.

---

|                |            |               |
|----------------|------------|---------------|
| Date of issue: | 18.11.2020 | Product code: |
|----------------|------------|---------------|

This Technical Data Sheet supersedes those previously issued. The Technical Data Sheet (TDS) is recommended to be read in conjunction with the Safety Data Sheet (SDS) for this product. For your nearest local Jotun office, please visit our website at [www.jotun.com](http://www.jotun.com).



Technical Data

Sheet Stucco

---



## Disclaimer

The information in this document is given to the best of Jotun's knowledge, based on laboratory testing and practical experience. Jotun's products are considered as semi-finished goods and as such, products are often used under conditions beyond Jotun's control. Jotun cannot guarantee anything but the quality of the product itself. Minor product variations may be implemented in order to comply with local requirements. Jotun reserves the right to change the given data without further notice. Users should always consult Jotun for specific guidance on the general suitability of this product for their needs and specific application practices. If there is any inconsistency between different language issues of this document, the English (United Kingdom) version will prevail.



# Fenomastic Pure Colours Emulsion Matt

## Product description

### Type

This product is a superior quality emulsion paint, designed for interior surfaces. Based on special acrylic copolymer emulsion.

### Features and benefits

Offers good flow, hiding power, incan anti bacterial and colour retention properties. Provides smooth durable and washable matt finish. Free from harmful chemicals like APEO, formaldehyde, heavy metals etc. Has very low VOC which ensures good indoor air quality.

### Recommended use

Ideal for decorating and protecting interior surfaces.

### Substrate

Cement plaster, concrete, block work, rendered surfaces, gypsum board etc. Substrate should have sufficient strength to receive the paint. Any defects in the substrate like surface undulations, cracks, pin holes etc., should be rectified/filled before starting painting. The compatibility of any third party filling material, if used, shall be confirmed with Jotun before application.







# Product data

|                                           |                                                                                                                                                  |
|-------------------------------------------|--------------------------------------------------------------------------------------------------------------------------------------------------|
| Packaging size                            | 1 L, 4 L and 18L Egypt and Libya : 1 L , 3 L and 10 L Turkey : 1 L 2.5 L, 15 L                                                                   |
| Colours Solids by volume Specific gravity | Refer to Fenomastic colour card.<br>35 ± 2volume% Theoretical<br>1.57 Theoretical Only for white colour<br>g/l ISO 11890 EU                      |
| VOC                                       | 16                                                                                                                                               |
| VOC comments                              | This is the theoretical value. Tested value will vary depending on test methodology, accuracy of equipment used for testing and test conditions. |

---

# Application data

The product can be applied by

Roller : Recommended. Spray : Use airless spray or conventional spray. Brush : Recommended to paint corners and edges.

## Guiding data for airless spray

0.021–0.027" 65–80° 140 - 190 kg/cm<sup>2</sup> (2100 psi)

Nozzle tip Spray angle degrees

Pressure at nozzle

## Cleaning of painting tools

Water





---

Date of issue: 06.06.2023 18.11.2020

Product code: 5422 4274

Page: 4/4

This Technical Data Sheet supersedes those previously issued.

The Technical Data Sheet (TDS) is recommended to be read in conjunction with the Safety Data Sheet (SDS) for this product. For your nearest local Jotun office, please visit our website at [www.jotun.com](http://www.jotun.com).







# Technical Data Sheet

## Fenomastic Pure Colours Emulsion Matt

### Film thickness per coat

Typical recommended range Dry film

thickness 30 - 55  $\mu\text{m}$

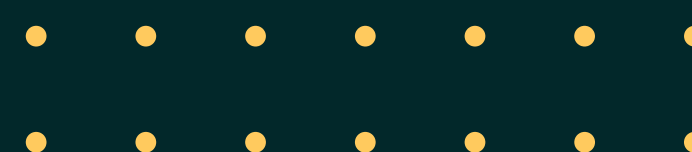
Wet film thickness 85 - 157  $\mu\text{m}$

Film thickness will vary and is calculated as average. Film thickness per coat values are presented here.

Theoretical spreading rate 11.67- 6.4  $\text{m}^2/\text{l}$

Spreading rate depends on film thickness applied, type of texture, surface porosity, imperfections, temperature, wastage during painting etc.

-Maximum spread rate per coat is obtained at minimum dry film thickness and vice versa.



## Thinner

Water

## Dilution

Maximum 10 %

## Conditions during application

The temperature of the substrate should be minimum 10 °C and at least 3 °C above the dew point of the air, measured in the vicinity of the substrate. Good ventilation is usually required in confined areas to ensure proper drying.

## Drying times

Drying times are generally related to air circulation, temperature, film thickness and number of coats, and will be affected correspondingly.

1. Recommended data given is, for recoating with the same generic type of paint.
2. In case of multi-coat application, drying times will be influenced by the number and sequence and by the total thickness of previous coats applied.
3. The surface should be dry and free from any contamination prior to application of the subsequent coat.



The drying time is measured by stated values:

Relative Humidity (RH) 50 %

Substrate temperature

10 °C

23 °C

40 °C

Surface (touch) dry

12 h

6 h

2 h

Hard dry

16 h

8 h

4 h

Dry to over coat, minimum

12 h

6 h

2 h

## Directions for use

### Surface preparation

The substrate must be sound, clean, dry and free from dust, oil, grease, laitance etc. All traces of form release agents/curing agents must be removed. A light sanding with suitable abrasive material is recommended before application. Any resulting dust/loose particles must be removed.

### Recommended paint system

#### Primer

Fenomastic Emulsion Primer or PVA Primer : 1 Coat

Date of issue: 06.06.2023

18.11.2020

Product code: ~~5474~~

Page: 2/4

This Technical Data Sheet supersedes those previously issued.

The Technical Data Sheet (TDS) is recommended to be read in conjunction with the Safety Data Sheet (SDS) for this product.

For your nearest local Jotun office, please visit our website at [www.jotun.com](http://www.jotun.com).

# Technical Data Sheet

## Fenomastic Pure Colours Emulsion Matt



### Filler

Stucco : 2 Coats

### Topcoat

Fenomastic Pure Colours Emulsion Matt : 2 Coats

### Remarks

Other systems may be specified, depending on area of use.

Contents of packaging with different batch numbers must be mixed together before use.

Please refer to the Decorative Sales Department for technical advice.

This product is available in: United Arab Emirates, Bahrain, Kuwait, Qatar, Saudi, Oman, Egypt, Libya and Turkey

### Storage

The product must be stored in accordance with national regulations. Keep the containers in a dry, cool, well ventilated space and away from sources of heat and ignition. Containers must be kept tightly closed. Handle with care.



# Environmental labelling

## Green Building Standards

This product contributes to Green Building Standard credits by meeting the following specific requirements: LEED®v4 (2013) EQ credit: Low emitting materials - VOC content for Flat coatings (50 g/l) (CARB(SCM)2007) and emission less or equal to 0.5 mg/m<sup>3</sup> (CDPH method 1.1). MR credit: Building product disclosure and optimization - Material Ingredients, Option 2: Material Ingredient Optimization, International Alternative Compliance Path - REACH optimization: Fully inventoried chemical ingredients to 100 ppm and not containing substances on the REACH Authorization list – Annex XIV, the Restriction list – Annex XVII and the SVHC candidate list. - Environmental Product Declarations. Product-specific Type III EPD (ISO 14025;21930, EN 15804). BREEAM® International (2016) - Hea 02: VOC emission ((ISO 16000-series (2006) or CDPH method 1.1 (2010)) and the VOC content for Interior matt walls and ceilings (Gloss <25 at 60°) (10 g/l). - Mat 01: Product-specific Type III EPD (ISO 14025; 21930, EN 15804). BREEAM® International (2013) - Hea 02: VOC content for Interior matt walls and ceilings (Gloss <25 at 60°) (30 g/l) (EU Directive 2004/42/CE ).

## Certificates

Reaction to Fire : Tested in accordance with ASTM E 84 - Class A

---

Date of issue: 06.06.2023 18.11.2020

Product code: 5422 4274

Page: 3/4 Page: 4/4

This Technical Data Sheet supersedes those previously issued.

The Technical Data Sheet (TDS) is recommended to be read in conjunction with the Safety Data Sheet (SDS) for this product.

For your nearest local Jotun office, please visit our website at [www.jotun.com](http://www.jotun.com).

Technical Data Sheet

Fenomastic Pure Colours Emulsion Matt



## Health and safety

Please observe the environmental and precautionary notices displayed on the container. A Material Safety Data Sheet for the product has been issued. Detailed information regarding health and safety risks and precautions for the use of this product is specified in the product's Safety Data Sheet. **First-aid measures**, refer to section 4. **Handling and storage**, refer to section 7. **Transport information**, refer to section 14. **Regulatory information**, refer to section 15.





# Disclaimer

The information in this document is given to the best of Jotun's knowledge, based on laboratory testing and practical experience. Jotun's products are considered as semi-finished goods and as such, products are often used under conditions beyond Jotun's control. Jotun cannot guarantee anything but the quality of the product itself. Minor product variations may be implemented in order to comply with local requirements. Jotun reserves the right to change the given data without further notice. Users should always consult Jotun for specific guidance on the general suitability of this product for their needs and specific application practices. If there is any inconsistency between different language issues of this document, the English (United Kingdom) version will prevail.

Date of issue: 06.06.2023 18.11.2020

Product code: 5422 4274

Page: 4/4

This Technical Data Sheet supersedes those previously issued.

The Technical Data Sheet (TDS) is recommended to be read in conjunction with the Safety Data Sheet (SDS) for this product. For your nearest local Jotun office, please visit our website at [www.jotun.com](http://www.jotun.com).





# PVA Primer

## Product description

### Type

This is an emulsion primer, designed for interior purposes. Based on acrylic copolymer emulsion.

### Features and benefits

Offers good flow and incan anti bacterial properties. Has low VOC as per ISO 11890 EU.

### Recommended use

Ideal for priming interior surfaces.

### Substrate

Cement plaster, concrete, block work, gypsum board etc. Substrate should have sufficient strength to receive the paint. Any defects in the substrate like surface undulations, cracks, pin holes etc., should be rectified/filled before starting painting.





# Product data

|                      |                              |
|----------------------|------------------------------|
| Packaging size       | 4 L and 18L<br>Jordan : 16 L |
| Colours              | White                        |
| Solids by volume     | 16 ± 2volume% Theoretical    |
| Specific gravity VOC | 1.2 0 Theoretical            |
| VOC comments         | g/l ISO 11890 EU             |

This is the theoretical value. Tested value will vary depending on test methodology, accuracy of equipment used for testing and test conditions.

# Application data

## The product can be applied by

Roller Recommended. Spray : Use airless spray or conventional spray. Brush : Recommended to paint corners and edges.

## Guiding data for airless spray

|                            |                               |
|----------------------------|-------------------------------|
| Nozzle tip Spray angle     | 0.018–0.021" 65–80° 140 - 190 |
| degrees Pressure at nozzle | kg/cm <sup>2</sup> (2100 psi) |



## Cleaning of painting tools

Water

---


Date of issue: 23.08.2023 18.11.2020

Product code: 4274

Page: 1/3 Page: 4/4

This Technical Data Sheet supersedes those previously issued.

The Technical Data Sheet (TDS) is recommended to be read in conjunction with the Safety Data Sheet (SDS) for this product. For your nearest local Jotun office, please visit our website at [www.jotun.com](http://www.jotun.com).









## Conditions during application

The temperature of the substrate should be minimum 10 °C and at least 3 °C above the dew point of the air, measured in the vicinity of the substrate. Good ventilation is usually required in confined areas to ensure proper drying.

## Drying times

Drying times are generally related to air circulation, temperature, film thickness and number of coats, and will be affected correspondingly.

1. Recommended data given is, for recoating with the same generic type of paint.
2. In case of multi-coat application, drying times will be influenced by the number and sequence and by the total thickness of previous coats applied.
3. The surface should be dry and free from any contamination prior to application of the subsequent coat.







The drying time is measured by stated values:

Relative Humidity (RH) 50 %

Substrate temperature

10 °C

23 °C

40 °C

Surface (touch) dry

6 h

3 h

1 h

Hard dry

10 h

5 h

3 h

Dry to over coat, minimum

8 h

4 h

2 h

## Directions for use

### Surface preparation

The substrate must be sound, clean, dry and free from dust, oil, grease, laitance etc. All traces of form release agents/curing agents must be removed. A light sanding with suitable abrasive material is recommended before application. Any resulting dust/loose particles must be removed.

### Recommended paint system

#### Primer

PVA Primer : 1 Coat

Date of issue: 23.08.2023 18.11.2020

Product code: 4271 4274

Page: 2/3 Page: 4/4

This Technical Data Sheet supersedes those previously issued.

The Technical Data Sheet (TDS) is recommended to be read in conjunction with the Safety Data Sheet (SDS) for this product.

For your nearest local Jotun office, please visit our website at [www.jotun.com](http://www.jotun.com).





### Filler

Stucco : 2 Coats

### Topcoat

Fenomastic series : 2 Coats or Recommended paint system

### Remarks

Other systems may be specified, depending on area of use. Contents of packaging with different batch numbers must be mixed together before use. Please refer to the Decorative Sales Department for technical advice. This product is available in: United Arab Emirates, Bahrain, Kuwait, Qatar, Oman and Turkey

### Storage

The product must be stored in accordance with national regulations. Keep the containers in a dry, cool, well ventilated space and away from sources of heat and ignition. Containers must be kept tightly closed. Handle with care.



## Health and safety

Please observe the environmental and precautionary notices displayed on the container. A Material Safety Data Sheet for the product has been issued. Detailed information regarding health and safety risks and precautions for the use of this product is specified in the product's Safety Data Sheet. **First-aid measures**, refer to section 4. **Handling and storage**, refer to section 7.

**Transport information**, refer to section 14. **Regulatory information**, refer to section 15.







# Disclaimer

The information in this document is given to the best of Jotun's knowledge, based on laboratory testing and practical experience. Jotun's products are considered as semi-finished goods and as such, products are often used under conditions beyond Jotun's control. Jotun cannot guarantee anything but the quality of the product itself. Minor product variations may be implemented in order to comply with local requirements. Jotun reserves the right to change the given data without further notice. Users should always consult Jotun for specific guidance on the general suitability of this product for their needs and specific application practices. If there is any inconsistency between different language issues of this document, the English (United Kingdom) version will prevail.

---

Date of issue: 23.08.2023 18.11.2020

Product code: 4271 4274

This Technical Data Sheet supersedes those previously issued.  
The Technical Data Sheet (TDS) is recommended to be read in conjunction with the Safety Data Sheet (SDS) for this product.  
For your nearest local Jotun office, please visit our website at [www.jotun.com](http://www.jotun.com).





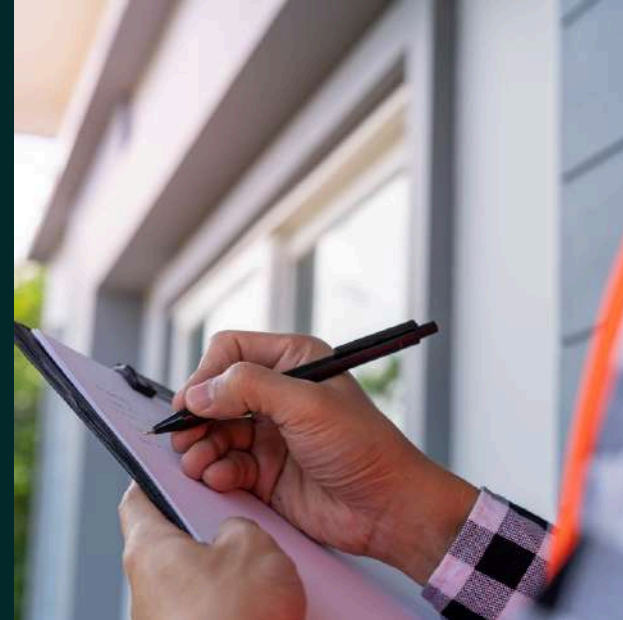


KGM

You choose the best

# MAINTENANCE

Keep your property in top condition with our reliable maintenance services. We offer a wide range of services, including electrical, plumbing, and general repairs, to ensure your home or business runs smoothly. Our team is dedicated to providing prompt and efficient solutions, minimizing disruptions and extending the lifespan of your property.







## Jotashield ColourLast Matt

### Product description

#### Type

This product is a superior quality, exterior, 100% pure acrylic water based topcoat.

#### Features and benefits

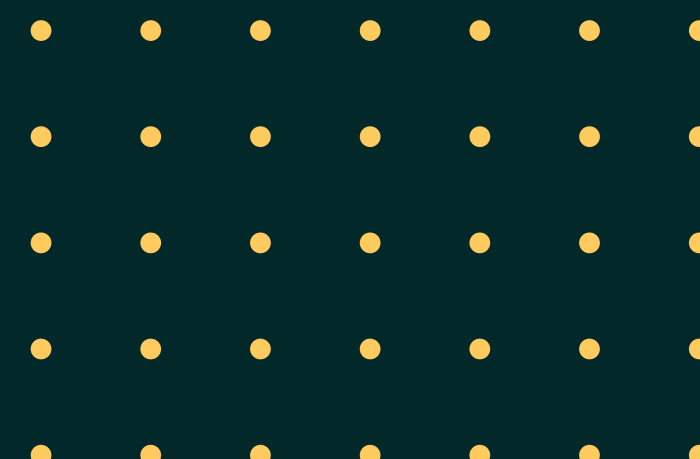
The unique UV protected colours offer outstanding protection against destructive effect of UV rays present in sunlight. Specially designed to withstand the harsh middle east weather conditions and provides durable & long lasting matt finish with low dirt pick up. Its unique formulation protects concrete from carbonation (Acts as anticarbonation coating).

#### Recommended use

Ideal for decorating and protecting exterior surfaces. This product can also be used in interior areas such as Basement car park walls and ceilings as an highly effective anti carbonation coating.

#### Substrate

Cement plaster, concrete, block work, rendered surfaces, gypsum board etc. Substrate should have sufficient strength to receive the paint. Any defects in the substrate like surface undulations, cracks, pin holes etc., should be rectified/filled before starting painting. The compatibility of any third party filling material, if used, shall be confirmed with Jotun before application.





# Product data

|                  |                                                                                                                                                  |
|------------------|--------------------------------------------------------------------------------------------------------------------------------------------------|
| Packaging size   | 1 L, 4 L and 18L<br>Egypt and Libya : 1 L and 10 L                                                                                               |
| Colours          | Refer to Jotashield exterior colour card.                                                                                                        |
| Solids by volume | 34 ± 2volume% Theoretical                                                                                                                        |
| Specific gravity | 1.31 Theoretical Only for white colour                                                                                                           |
| VOC              | 22 g/l ISO 11890 EU                                                                                                                              |
| VOC comments     | This is the theoretical value. Tested value will vary depending on test methodology, accuracy of equipment used for testing and test conditions. |

## Application data

### The product can be applied by

Roller : Recommended. Spray : Use airless spray or conventional spray. Brush :  
Recommended to paint corners and edges.

### Guiding data for airless spray

Nozzle tip Spray angle degrees 0.021–0.027" 65–80° 140 - 190 kg/cm<sup>2</sup> (2100 psi)  
Pressure at nozzle

### Cleaning of painting tools

Water

Date of issue: 27.10.2023

Product code: 26860

Page: 1/4

This Technical Data Sheet supersedes those previously issued.

The Technical Data Sheet (TDS) is recommended to be read in conjunction with the Safety Data Sheet (SDS) for this product.  
For your nearest local Jotun office, please visit our website at [www.jotun.com](http://www.jotun.com).

# Technical Data Sheet

## Jotashield ColourLast Matt



### Film thickness per coat

#### Typical recommended range

|                    |                         |
|--------------------|-------------------------|
| Dry film thickness | 35 - 50 $\mu\text{m}$   |
| Wet film thickness | 102 - 147 $\mu\text{m}$ |

Film thickness will vary and are calculated as an average.

|                            |                                 |
|----------------------------|---------------------------------|
| Theoretical spreading rate | 9.7 - 6.8 $\text{m}^2/\text{l}$ |
|----------------------------|---------------------------------|

Spreading rate depends on film thickness applied, type of texture, surface porosity, imperfections, temperature, wastage during painting etc.

Maximum spread rate per coat is obtained at minimum dry film thickness and vice versa.



## Thinner

Water

## Dilution

Maximum 10%

## Conditions during application

The temperature of the substrate should be minimum 10 °C and at least 3 °C above the dew point of the air, measured in the vicinity of the substrate. Good ventilation is usually required in confined areas to ensure proper drying.

## Drying times

Drying times are generally related to air circulation, temperature, film thickness and number of coats, and will be affected correspondingly.

1. Recommended data given is, for recoating with the same generic type of paint.
2. In case of multi-coat application, drying times will be influenced by the number and sequence and by the total thickness of previous coats applied.
3. The surface should be dry and free from any contamination prior to application of the subsequent coat.





The drying time is measured by stated values:

Relative Humidity (RH) 50 %

Substrate temperature

|  | 10 °C | 23 °C | 40 °C |
|--|-------|-------|-------|
|--|-------|-------|-------|

|                     |      |     |     |
|---------------------|------|-----|-----|
| Surface (touch) dry | 12 h | 6 h | 2 h |
|---------------------|------|-----|-----|

|          |      |     |     |
|----------|------|-----|-----|
| Hard dry | 16 h | 8 h | 4 h |
|----------|------|-----|-----|

|                           |      |     |     |
|---------------------------|------|-----|-----|
| Dry to over coat, minimum | 12 h | 6 h | 2 h |
|---------------------------|------|-----|-----|

---

## Directions for use

### Surface preparation

The substrate must be sound, clean, dry and free from dust, oil, grease, laitance etc. All traces of form release agents/curing agents must be removed. A light sanding with suitable abrasive material is recommended before application. Any resulting dust/loose particles must be removed.

### Recommended paint system

### Primer

Acrylic Emulsion Primer or Jotashield Alkali Resistant Primer or Jotashield Penetrating Primer : 1 Coat

---

Date of issue: 27.10.2023

Product code: 26860

Page: 2/4

This Technical Data Sheet supersedes those previously issued.

The Technical Data Sheet (TDS) is recommended to be read in conjunction with the Safety Data Sheet (SDS) for this product.

For your nearest local Jotun office, please visit our website at [www.jotun.com](http://www.jotun.com).

# Technical Data Sheet

## Jotashield ColourLast Matt



### Topcoat

Jotashield ColourLast Matt : 2 Coats. Use Jotashield Filler or Jotashield Ultra Bond Filler to rectify any imperfections on the substrate followed by sanding and the removal of accumulated dust.

### Remarks

Other systems may be specified, depending on area of use. Masking tape has to be removed immediately after application of the topcoat. Contents of packaging with different batch numbers must be mixed together before use. Please refer to the Decorative Sales Department for technical advice.

This product is available in: United Arab Emirates, Bahrain, Kuwait, Qatar, Saudi, Oman, Egypt and Libya

### Storage

The product must be stored in accordance with national regulations. Keep the containers in a dry, cool, well ventilated space and away from sources of heat and ignition. Containers must be kept tightly closed. Handle with care.



# Environmental labelling

## Green Building Standards

The declared product contributes to Green Building Standard credits by meeting the following specific requirements: LEED®v4 (2013) MR credit: Building product disclosure and optimization - Material Ingredients, Option 2: Material Ingredient Optimization, International Alternative Compliance Path - REACH optimization: Fully inventoried chemical ingredients to 100 ppm and not containing substances on the REACH Authorization list – Annex XIV, the Restriction list – Annex XVII and the SVHC candidate list. - Environmental Product Declarations. Product-specific Type III EPD (ISO 14025;21930, EN 15804). SS Credit: Heat Island Reduction Selected colour(s) of this product meets the requirements of: - SR of at least 0.33 for Non-roof structures - SRI of at least 39 for Steep-sloped roof - SRI of at least 82 for Low-sloped roof - SRI of at least 39 for Parking roof covering LEED® (2009) SS credit 7.1: Heat Island Effect - Nonroof Hardscape, Roof structures and Parking roof covering. Selected colour(s) have SRI of at least 29. SS credit 7.2: Heat Island Effect - Roof Selected colour(s) have SRI of at least 29 for Steep-sloped roof and 78 for Low-sloped roof. BREEAM® International (2016) - Mat 01: Product-specific Type III EPD (ISO 14025;21930, EN 15804). BREEAM® International (2013) - Hea 02: VOC content for Exterior walls of mineral substrate WB (40 g/l) (EU Directive 2004/42/CE). Additional certificates and approvals may be available on request.

## Certificates

Date of issue: 27.10.2023

Product code: 26860

Page: 3/4

This Technical Data Sheet supersedes those previously issued.

The Technical Data Sheet (TDS) is recommended to be read in conjunction with the Safety Data Sheet (SDS) for this product. For your nearest local Jotun office, please visit our website at [www.jotun.com](http://www.jotun.com).





# Technical Data Sheet

## Jotashield ColourLast Matt

---


Carbon di-oxide diffusion resistance : Tested in accordance with BS EN-1062-6 - Class C1, as per BS EN 1062-1 Water vapour transmission rate : Class V1 (high), as per BS EN 1062-1 Liquid water transmission rate : Tested in accordance with EN 1062-3 - Class W3 (low), as per BS EN 1062-1 UV resistance : Tested in accordance with BS EN 1062-11

Reaction to Fire : Tested in accordance with ASTM E 84 - Class A

---

## Health and safety

Please observe the environmental and precautionary notices displayed on the container. A Material Safety Data Sheet for the product has been issued. Detailed information regarding health and safety risks and precautions for the use of this product is specified in the product's Safety Data Sheet. First-aid measures, refer to section 4. Handling and storage, refer to section 7. Transport information, refer to section 14. Regulatory information, refer to section 15.





# Disclaimer

The information in this document is given to the best of Jotun's knowledge, based on laboratory testing and practical experience. Jotun's products are considered as semi-finished goods and as such, products are often used under conditions beyond Jotun's control. Jotun cannot guarantee anything but the quality of the product itself. Minor product variations may be implemented in order to comply with local requirements. Jotun reserves the right to change the given data without further notice. Users should always consult Jotun for specific guidance on the general suitability of this product for their needs and specific application practices. If there is any inconsistency between different language issues of this document, the English (United Kingdom) version will prevail.

---

Date of issue: 27.10.2023

Product code: 26860

Page: 4/4

This Technical Data Sheet supersedes those previously issued.

The Technical Data Sheet (TDS) is recommended to be read in conjunction with the Safety Data Sheet (SDS) for this product. For your nearest local Jotun office, please visit our website at [www.jotun.com](http://www.jotun.com).





## Acrylic Emulsion Primer

### Product description

#### Type

This product is an alkali resistant exterior emulsion primer. Based on acrylic copolymer emulsion.

#### Features and benefits

Excellent penetration into the substrate there by providing the best adhesion. Offers best protection against alkali attack.

#### Recommended use

Ideal for priming exterior surfaces. Can also be used to prime interior surfaces.

#### Substrate

Cement plaster, concrete, block work, rendered surfaces etc. Substrate should have sufficient strength to receive the paint. Any defects in the substrate like surface undulations, cracks, pin holes etc., should be rectified/filled before starting painting. The compatibility of any third party filling material, if used, shall be confirmed with Jotun before application.

---

## Product data

|                  |                                                                                                                                                  |              |
|------------------|--------------------------------------------------------------------------------------------------------------------------------------------------|--------------|
| Packaging size   | 4 L and 18L                                                                                                                                      |              |
| Colours          | White                                                                                                                                            |              |
| Solids by volume | 32 ± 2volume%                                                                                                                                    | Theoretica   |
| Specific gravity | 1.45                                                                                                                                             | Theoretica   |
| VOC              | 15 g/l                                                                                                                                           | ISO 11890 EU |
| VOC comments     | This is the theoretical value. Tested value will vary depending on test methodology, accuracy of equipment used for testing and test conditions. |              |





# Application data

The product can be applied by

Roller : Recommended. Spray : Use airless spray or conventional spray. Brush : Recommended to paint corners and edges.

## Guiding data for airless spray

|                            |                               |
|----------------------------|-------------------------------|
| Nozzle tip Spray angle     | 0.021–0.027" 65–80° 140 - 190 |
| degrees Pressure at nozzle | kg/cm <sup>2</sup> (2100 psi) |

## Cleaning of painting tools

Water

---

Date of issue: 31.08.2018

Product code: 4100

Page: 1/4

This Technical Data Sheet supersedes those previously issued.

The Technical Data Sheet (TDS) is recommended to be read in conjunction with the Safety Data Sheet (SDS) for this product. For your nearest local Jotun office, please visit our website at [www.jotun.com](http://www.jotun.com).

# Technical Data Sheet

## Acrylic Emulsion Primer



### Film thickness per coat

Typical recommended range Dry

|                    |    |   |     |    |
|--------------------|----|---|-----|----|
| film thickness     | 25 | - | 35  | µm |
| Wet film thickness | 80 | - | 110 | µm |

Film thickness will vary and is calculated as average. Film thickness per coat values are presented here.

|                            |      |   |     |                   |
|----------------------------|------|---|-----|-------------------|
| Theoretical spreading rate | 12.8 | - | 9.2 | m <sup>2</sup> /l |
|----------------------------|------|---|-----|-------------------|

Spreading rate depends on film thickness applied, type of texture, surface porosity, imperfections, temperature, wastage during painting etc.

Maximum spread rate per coat is obtained at minimum dry film thickness and vice versa.

### Thinner

Water

### Dilution

Maximum 10 %

### Conditions during application

The temperature of the substrate should be minimum 10 °C and at least 3 °C above the dew point of the air, measured in the vicinity of the substrate. Good ventilation is usually required in confined areas to ensure proper drying.



## Drying times

Drying times are generally related to air circulation, temperature, film thickness and number of coats, and will be affected correspondingly.

1. Recommended data given is, for recoating with the same generic type of paint.
2. In case of multi-coat application, drying times will be influenced by the number and sequence and by the total thickness of previous coats applied.
3. The surface should be dry and free from any contamination prior to application of the subsequent coat.

The drying time is measured by stated values:

Relative Humidity (RH) 50 %

| Substrate temperature     | 10 °C | 23 °C | 40 °C |
|---------------------------|-------|-------|-------|
| Surface (touch) dry       | 6 h   | 3 h   | 1 h   |
| Hard dry                  | 12 h  | 5 h   | 3 h   |
| Dry to over coat, minimum | 6 h   | 3 h   | 1 h   |

## Directions for use

### Surface preparation

The substrate must be sound, clean, dry and free from dust, oil, grease, laitance etc. All traces of form release agents/curing agents must be removed. A light sanding with suitable abrasive material is recommended before application. Any resulting dust/loose particles must be removed.

### Recommended paint system Primer

Acrylic Emulsion Primer : 1 Coat

Date of issue: 31.08.2018

Product code: 4100

Page: 2/4

This Technical Data Sheet supersedes those previously issued.

The Technical Data Sheet (TDS) is recommended to be read in conjunction with the Safety Data Sheet (SDS) for this product. For your nearest local Jotun office, please visit our website at [www.jotun.com](http://www.jotun.com).



# Technical Data Sheet

## Acrylic Emulsion Primer

---



### Topcoat

Jotashield or Jotacryl or Durathane : 2 Coats

### Remarks

As a primer for textured topcoats in the 'World of Textures'. Other systems may be specified, depending on area of use. Contents of packaging with different batch numbers must be mixed together before use. Please refer to the Decorative Sales Department for technical advice.

This product is available in: United Arab Emirates, Bahrain, Kuwait, Qatar, Saudi

### Storage

The product must be stored in accordance with national regulations. Keep the containers in a dry, cool, well ventilated space and away from sources of heat and ignition. Containers must be kept tightly closed. Handle with care.



# Environmental labelling

## Green Building Standards

This product contributes to Green Building Standard credits by meeting the following specific requirements: LEED®v4 (2013) EQ credit: Low emitting materials - VOC content for Primers, Sealers and Undercoaters (100 g/l) (CARB(SCM)2007) and emission lower than or equal to 0,5 mg/m<sup>3</sup> (CDPH method 1.1). MR credit: Building product disclosure and optimization - Material Ingredients, Option 2: Material Ingredient Optimization, International Alternative Compliance Path - REACH optimization: Fully inventoried chemical ingredients to 100 ppm and not containing substances on the REACH Authorization list – Annex XIV, the Restriction list – Annex XVII and the SVHC candidate list. - Environmental Product Declarations. Product-specific Type III EPD (ISO 14025;21930, EN 15804). BREEAM® International (2016) - Hea 02: Meets the VOC emission demands (ISO 16000-9/10 (2006) or CDPH method 1.1 (2010)). - Mat 01: Product-specific Type III EPD (ISO 14025;21930, EN 15804). BREEAM® International (2013) Hea 02: VOC content for Interior matt walls and ceilings (Gloss <25 at 60°) (30 g/l) (EU Directive 2004/42/CE). Additional certificates and approvals may be available on request.

---

## Health and safety

Please observe the environmental and precautionary notices displayed on the container. A Material Safety Data Sheet for the product has been issued. Detailed information regarding health and safety risks and precautions for the use of this product is specified in the product's Safety Data Sheet. First-aid measures, refer to section 4. Handling and storage, refer to section 7. Transport information, refer to section 14. Regulatory information, refer to section 15.

---

Date of issue: 31.08.2018

Product code: 4100

Page: 3/4

This Technical Data Sheet supersedes those previously issued.

The Technical Data Sheet (TDS) is recommended to be read in conjunction with the Safety Data Sheet (SDS) for this product. For your nearest local Jotun office, please visit our website at [www.jotun.com](http://www.jotun.com).



## Disclaimer

The information in this document is given to the best of Jotun's knowledge, based on laboratory testing and practical experience. Jotun's products are considered as semi-finished goods and as such, products are often used under conditions beyond Jotun's control. Jotun cannot guarantee anything but the quality of the product itself. Minor product variations may be implemented in order to comply with local requirements. Jotun reserves the right to change the given data without further notice. Users should always consult Jotun for specific guidance on the general suitability of this product for their needs and specific application practices. If there is any inconsistency between different language issues of this document, the English (United Kingdom) version will prevail.

Date of issue: 31.08.2018

Product code: 4100

Page: 4/4

This Technical Data Sheet supersedes those previously issued.

The Technical Data Sheet (TDS) is recommended to be read in conjunction with the Safety Data Sheet (SDS) for this product. For your nearest local Jotun office, please visit our website at [www.jotun.com](http://www.jotun.com).



## Texo Compound Product description

### Type

This product is an exterior emulsion intermediate coat. Based on acrylic copolymer emulsion.

### Features and benefits

This product is specially formulated for providing textured surfaces. Covers minor undulations in the surface.

### Recommended use

Ideal for providing texture coat in Acrylic textotile system. This product can also be used to fill/smoothen minor imperfections on both exterior and interior concrete and plastered surfaces.

### Substrate

Cement plaster, concrete, block work, rendered surfaces etc. Substrate should have sufficient strength to receive the paint. Any defects in the substrate like surface undulations, cracks, pin holes etc., should be rectified/filled before starting painting.



## Product data

|                                           |                                                                                                                                                  |
|-------------------------------------------|--------------------------------------------------------------------------------------------------------------------------------------------------|
| Packaging size                            | 4 L and 18L Egypt : 10 L and 20 L Turkey : 15 L                                                                                                  |
| Colours Solids by volume Specific gravity | White<br>62 ± 2volume% Theoretical<br>1.8 Theoretical<br>Theoretical                                                                             |
| VOC                                       | 0 g/l ISO 11890 EU                                                                                                                               |
| VOC comments                              | This is the theoretical value. Tested value will vary depending on test methodology, accuracy of equipment used for testing and test conditions. |

## Application data

The product can be applied by  
Spray : Gravity Feed Hopper Gun or other suitable equipment.

Consult Jotun for additional information, as required.

### Cleaning of painting tools

Water

Date of issue: 03.05.2018

Product code: 4276

Page: 1/3

This Technical Data Sheet supersedes those previously issued.

The Technical Data Sheet (TDS) is recommended to be read in conjunction with the Safety Data Sheet (SDS) for this product. For your nearest local Jotun office, please visit our website at [www.jotun.com](http://www.jotun.com).

# Technical Data Sheet

## Texo Compound



### Film thickness per coat

Typical recommended range Dry

|                    |     |         |
|--------------------|-----|---------|
| film thickness     | 100 | -2000µm |
| Wet film thickness | 160 | -3225µm |

Film thickness will vary and is calculated as average.

|                            |     |                        |
|----------------------------|-----|------------------------|
| Theoretical spreading rate | 6.2 | - 0.3m <sup>2</sup> /l |
|----------------------------|-----|------------------------|

Spreading rate depends on film thickness applied, type of texture, surface porosity, imperfections, temperature, wastage during painting etc.

The average consumption can be confirmed at site by a trial application.

### Thinner

Water

### Dilution

Maximum 10 %

### Conditions during application

The temperature of the substrate should be minimum 10 °C and at least 3 °C above the dew point of the air, measured in the vicinity of the substrate. Good ventilation is usually required in confined areas to ensure proper drying.







# Health and safety

Please observe the environmental and precautionary notices displayed on the container. A Material Safety Data Sheet for the product has been issued. Detailed information regarding health and safety risks and precautions for the use of this product is specified in the product's Safety Data Sheet. First-aid measures, refer to section 4. Handling and storage, refer to section 7. Transport information, refer to section 14. Regulatory information, refer to section 15.

---

## Disclaimer

The information in this document is given to the best of Jotun's knowledge, based on laboratory testing and practical experience. Jotun's products are considered as semi-finished goods and as such, products are often used under conditions beyond Jotun's control. Jotun cannot guarantee anything but the quality of the product itself. Minor product variations may be implemented in order to comply with local requirements. Jotun reserves the right to change the given data without further notice. Users should always consult Jotun for specific guidance on the general suitability of this product for their needs and specific application practices. If there is any inconsistency between different language issues of this document, the English (United Kingdom) version will prevail.

---

Date of issue: 03.05.2018

Product 4276

Page: 3/3

This Technical Data Sheet supersedes those previously issued code:

The Technical Data Sheet (TDS) is recommended to be read in conjunction with the Safety Data Sheet (SDS) for this product. For your nearest local Jotun office, please visit our website at [www.jotun.com](http://www.jotun.com).





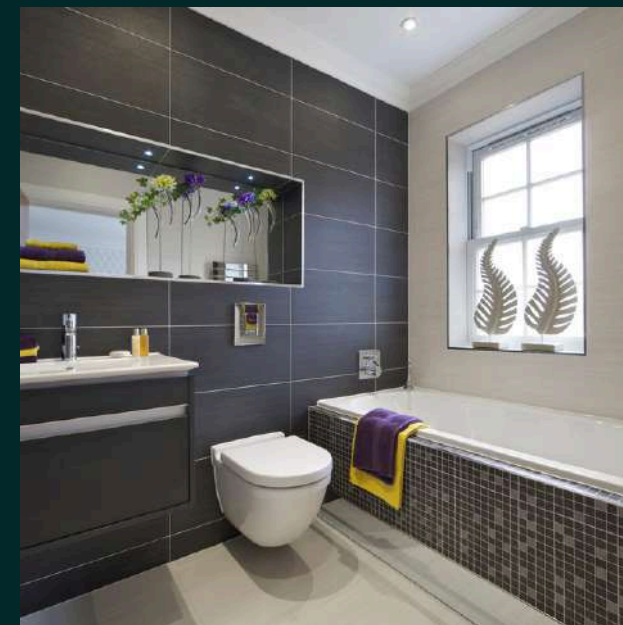
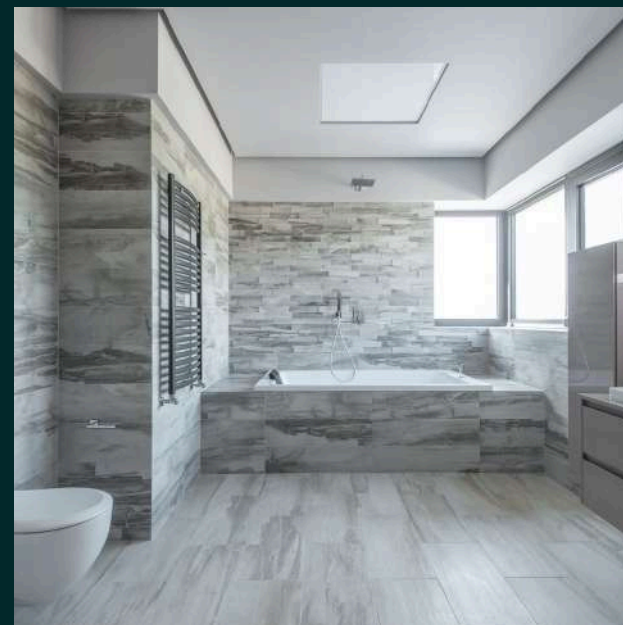
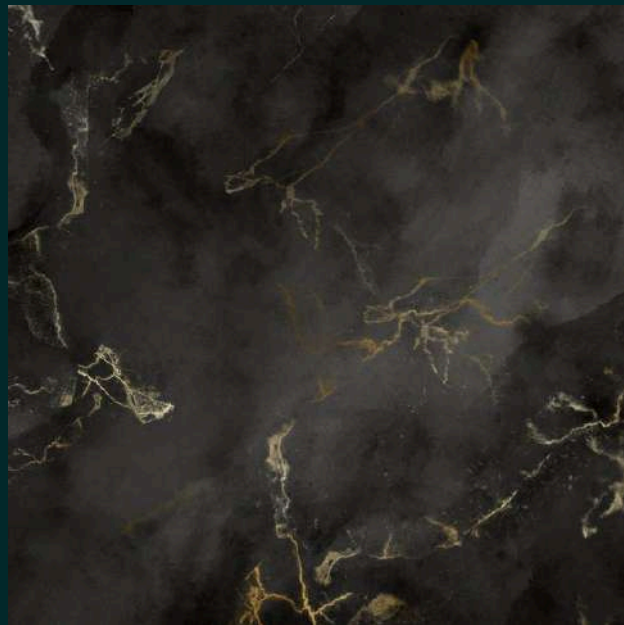
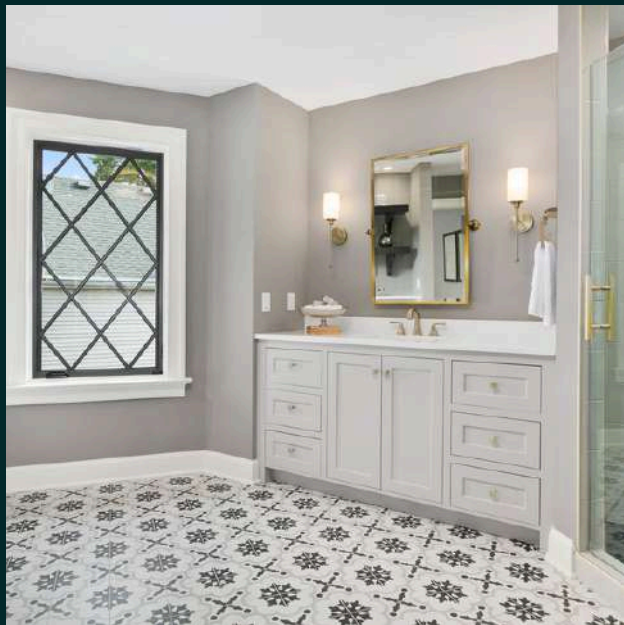


KGM

You choose the best

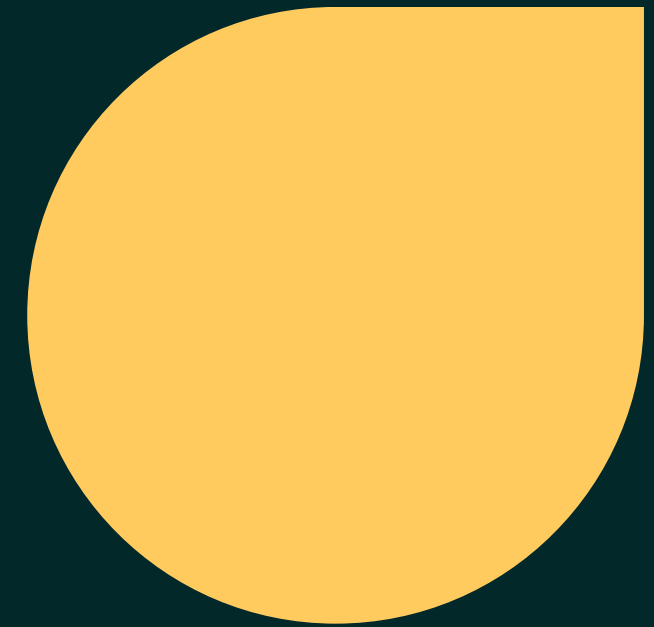
# TILE & MARBLE FIXING

Enhance your interiors with our professional tile and marble fixing services. Whether you're updating your kitchen, bathroom, or any other area, we provide precise installation of tiles and marble to achieve a polished and sophisticated look. Our experts handle every aspect, from surface preparation to finishing touches, ensuring a flawless result.





# Our Clients





# COMPANY DOCUMENT

## Economic License

Commercial License

Emerging Economic Establishment

## رخصة اقتصادية

رخصة تجارية

مؤسسة اقتصادية ناشئة

|                          |    |                                                                                    |   |                                                   |
|--------------------------|----|------------------------------------------------------------------------------------|---|---------------------------------------------------|
| License No               | == | CN-2962145                                                                         | 1 | رقم الرخصة                                        |
| ADCCI No                 | == | 2618251                                                                            | 1 | خطوة الترخيص                                      |
| Establishment Card MOHRE | == | 1080585                                                                            | 1 | وزارة الموارد البشرية والتوطين<br>بطاقة المؤسسة   |
| Establishment Card ICA   | == | 724847                                                                             | 1 | الهيئة الاتحادية للهوية والجنسية<br>بطاقة المؤسسة |
| Legal Form               | == | Sole Proprietorship L.L.C.                                                         | 1 | نوع التأسيس                                       |
| Trade Name               | == | KOLKATA GENERAL MAINTENANCE AND PROPERTIES MANAGEMENT - SOLE PROPRIETORSHIP L.L.C. | 1 | اسم التجاري                                       |
| Establishment Date       | == | 09/01/2020                                                                         | 2 | تاريخ تأسيس المؤسسة                               |
| Issue Date               | == | 04/01/2024                                                                         | 2 | تاريخ الإصدار                                     |
| Expiry Date              | == | 08/01/2025                                                                         | 2 | تاريخ الانتهاء                                    |

| الصفة<br>Role   | الجنسية<br>Nationality | الاسم الكامل<br>Name / Full Name                                                                        | الرقم<br>No. |
|-----------------|------------------------|---------------------------------------------------------------------------------------------------------|--------------|
| مالك<br>Owner   | الهند<br>India         | شيخ نور الإسلام محمد محسن شيخ محمد محسن<br>SHAIKH NURUL ISLAM MOHAMED MOHASIN SHAIKH<br>MOHAMED MOHASIN | 42023595     |
| مدير<br>Manager | الهند<br>India         | شيخ نور الإسلام محمد محسن شيخ محمد محسن<br>SHAIKH NURUL ISLAM MOHAMED MOHASIN SHAIKH<br>MOHAMED MOHASIN | 42163253     |

|                                              |    |                                 |
|----------------------------------------------|----|---------------------------------|
| Economic Activities                          | == | النشاط الاقتصادي                |
| - Real Estate Lease And Management Services  |    | خدمات الترخيص والتجارة          |
| - Buildings Maintenance                      |    | صيانة المباني                   |
| - Professional Safety And Health Consultancy |    | استشارات السلامة والصحة المهنية |
| Address                                      | == | العنوان                         |
| ==                                           | == | العنوان البريدي                 |



مركز أبوظبي للأعمال  
Abu Dhabi Business Center

الرقم الوطني  
UAE PASS OR UAE  
ID CARD



www.added.gov.ae



KGM

You choose the best

# CONTACT US



+97126450863



kbmandpm@gmoil.com



PO Box: 45143 Abu Dhabi-UAE



<https://kgmrealestate.org>

